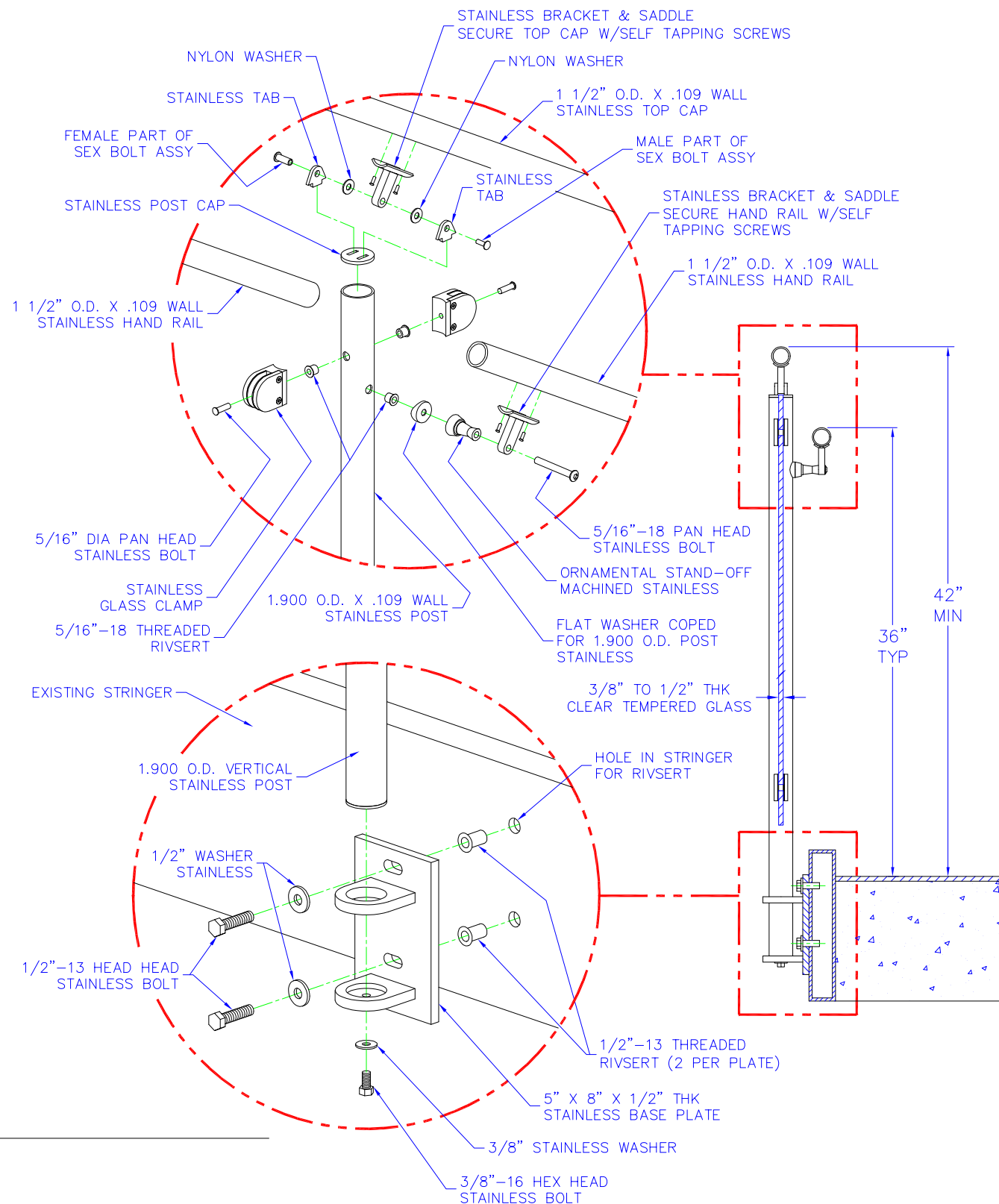
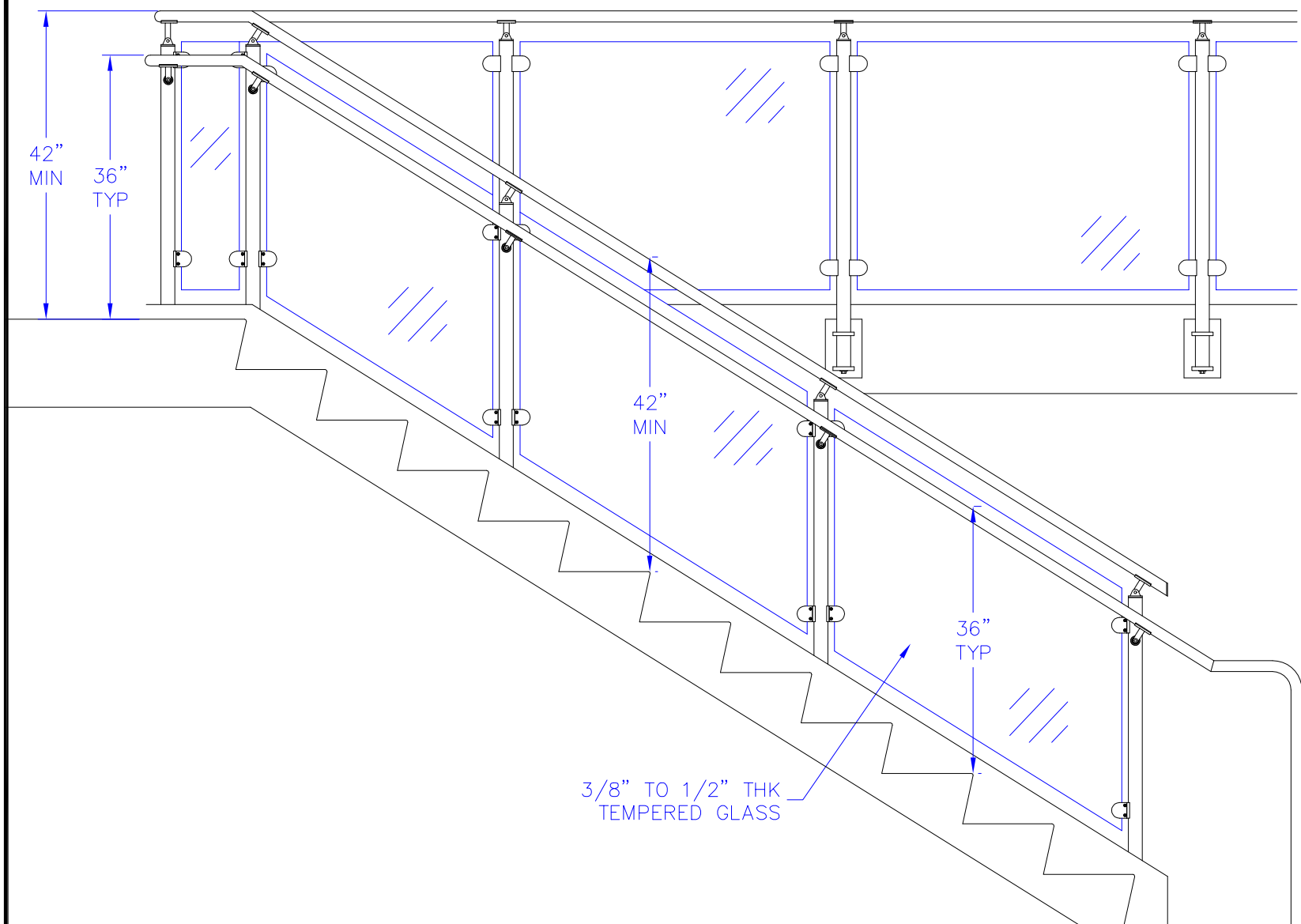


OPTIONS AVAILABLE FOR THE FOLLOWING COMPONENTS

- TOP CAP – STAINLESS, ALUMINUM, WOOD, ETC.
- HAND RAIL – STAINLESS, ALUMINUM, WOOD, ETC.
- GLASS PANELS – VARIOUS THICKNESS, SHADES, ENGRAVINGS, SHAPES, ETC.
- MATERIAL FINISHES – VARIOUS POLISHES, COATINGS, ETC.



**STAINLESS**  
FABRICATORS, INC.

1834 GUNN HIGHWAY  
BUILDING C  
ODESSA, FL 33556  
EMAIL - [www.sales@stainlessfabinc.com](mailto:www.sales@stainlessfabinc.com)  
WEBSITE - [www.stainlessfabinc.com](http://www.stainlessfabinc.com)

PHONE (813)-926-7113  
FAX (813)-926-7114

ASSOCIATED PROJECTS  
UNIVERSITY OF ALABAMA  
RAKE 5497, 6489, 6588 42"  
LEVEL 5890 42"  
RADIUS 5893, 6488 42"

RAILING SERIES  
**POMPANO - SIDE MOUNT**

QUOTE NO. NONE  
FILE NAME POMPANO SERIES A

OPTION LETTER  
**A**

SHEET NO.  
1 OF 1

